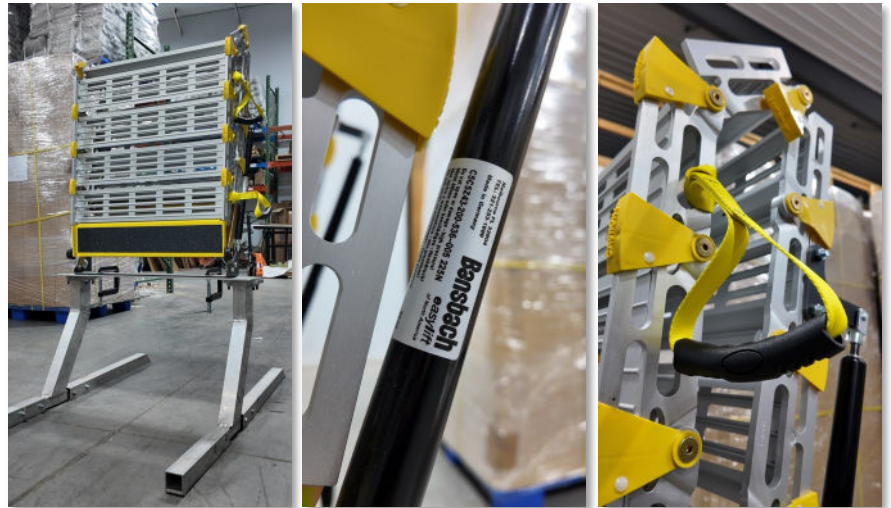




FEATURES & BENEFITS

- German-engineered gas struts reduce required exertion by 40%.
- Ergonomic adjustable handles.
- Occupied internal depth of only 10" - 12".
- Sturdy 1,000 pound load capacity*.
- Enables access to vans at low cost!



Available ramp widths:
26"
30"
36"

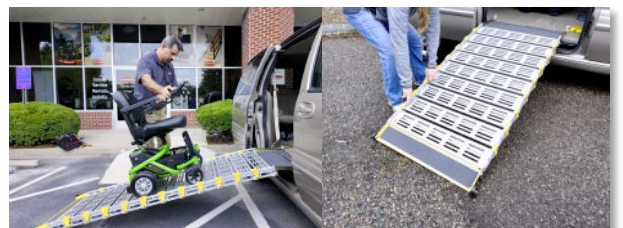
Available ramp lengths:
6'
7'
8'
9'

Always Confirm Vehicle Compatibility Before Ordering!

REAR INSTALLATION



SIDE INSTALLATION



***Weight capacity of 9' x 30" Folding Ramp and 9' x 36" Folding Ramp is 850 pounds**

NEW!

Assisted Bi-Fold Van Ramp



CHECK COMPATIBILITY WITH VAN PRIOR TO ORDERING

1) Measure Door Width and Height 2) Measure Wheelbase of Van 3) Refer to

Assisted Bifold Ramp Conversion Kit		
		RETAIL
ABF-CONV	Kit For Making Manual Ramp Strut Assisted	\$625
ABF-26	6' x 26" Assisted Folding Ramp 40" door height	\$1,901
ABF-26.7	7' x 26" Assisted Folding Ramp 46" door height	\$2,005
ABF-26.8	8' x 26" Assisted Folding Ramp 52" door height	\$2,101
ABF-26.9	9' x 26" Assisted Folding Ramp 58" door height	\$2,153
Requires 28" wide minimum side door opening, maximum chair wheelbase is 25"		
ABF-30	8' x 30" Assisted Folding Ramp 40" door height	\$2,178
ABF-30.7	7' x 30" Assisted Folding Ramp 46" door height	\$2,075
ABF-30.9	9' x 30"* Assisted Folding Ramp 58" door height	\$2,287
Requires 32" minimum side door opening, maximum chair wheelbase is 29"		
Full Size Van Assisted Folding Van Ramps		
ABF-36	8' x 36" Manual Folding Ramp 40" door height	\$2,233
ABF-36.7	7' x 36" Manual Folding Ramp 46" door height	\$2,126
ABF-36.9	9' x 36"* Manual Folding Ramp 58" door height	\$2,340
Requires 38" minimum side door opening, maximum chair wheelbase is 35"		



*** 850 pound weight capacity**

VAN RAMPS ARE SHIPPED FREIGHT:

Commercial no liftgate: \$250

Commercial w/ liftgate: \$335

Residential w/ liftgate: \$375

Inside Delivery: +\$50

Roll-A-Ramp® Return Policy

*20% Restocking Fee

*Return within 90 days from purchase

*Outbound shipping is not refunded

*Customer responsible for ramp return

Refund issued upon return of items in acceptable condition.